



Europe's
leader in
signalling

eSIGN – a new dimension in signalling

The best signal tower ever.



eSIGN – the new benchmark in industrial signalling

The KombiSIGN signal tower created a global industry standard, and we have now developed it even further. eSIGN is the future of signal technology – a signal tower that, thanks to electronic modularity, sets new standards in terms of visibility, individuality and efficiency.

Powerful features, maximum compatibility and an industrial design that blends functionality with style and robustness. As the latest generation, eSIGN defines the future of the signal tower and the new standard in industrial signalling.

Take a closer look at the possibilities and performance offered by our new eSIGN signal tower. Naturally from WERMA, Europe's leading signal.



Full-surface signalling

Clear, unmistakeable light effects for maximum visibility



Versatile customisation options

Different modes, light effects and tones for diverse applications



Robust industrial design

UL Type 4X ensures resistance to UV radiation and environmental influences



The right product for every application

2 sizes, with / without siren, 24 V supply voltage / versions with IO-Link technology

Signal technology as you've never seen it before

The new **eSIGN** brings new dimensions to light. Electronic modularity enables the product to create a variety of signal modes with various colours, brightness levels and light effects, from the classic signal tower to completely customised settings. **eSIGN** can also switch with ease between variable filling level indications or full-surface signalling. In addition to providing you with an overview of your process cycles, this also opens up completely new options.

- ✓ **Classic signal tower indication in individual tiers**
- ✓ **Autoscale mode for full-surface signalling and optimum visibility**
- ✓ **Variable filling level indication from 0 to 100 %**
- ✓ **Individual triggering to suit your requirements**



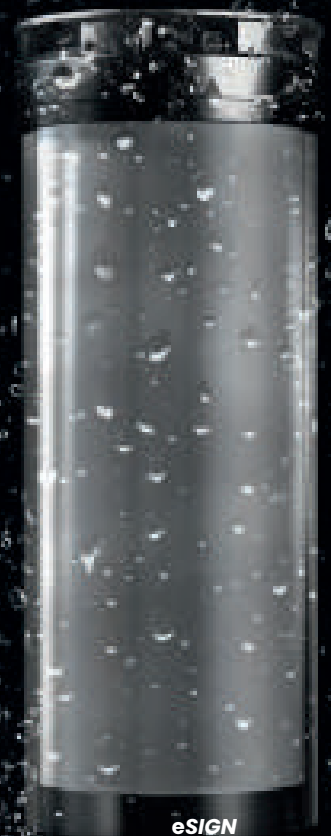
Light in new dimensions

The new **eSIGN** is a brilliant example of a signal tower with visibly greater performance. More colours, more effects, more individuality. Or do you need a classic signal tower? A variable filling level indicator? Full-surface signalling, or completely individual signalling options? Diverse light effects such as permanent, blinking, flashing or rotating light? eSIGN can meet all these requirements. This is made possible through electronic modularity combined with the latest LED technology.



Ready to resist.

- ✓ Enhanced resistance to typical production substances
- ✓ UV resistant
- ✓ IP66 / IP69k
- ✓ UL type 4X



Warns and alerts, indicates filling levels, renders processes safe and efficient

Process monitoring

Access control

Alerting

Visual warning

Operating status

Monitoring

Filling level indication

Fault indication

Status indication

Material availability level

Audible warning

Building security





Up to **105 dB**

sound output level at max 1m distance



Ensure that everything is running okay? Sounds good.

Production, logistics, building services, mechanical and plant engineering, ... audible signalling systems are an indispensable part of daily working processes all over the world.

This does not apply solely to the safety of personnel and the protection of equipment, but also smooth workflows and the comforting assurance that everything is running okay.

The new eSIGN offers the option of a siren with up to 10 different tones that can also be set to meet application-specific requirements.

The siren can of course be combined with light effects, variable sound output options and uncomplicated configuration. Sounds good? Sounds like WERMA.

eSIGN is versatile and can be customised – as if made especially for you



Works perfectly. Every time.

Let's talk about performance, production quantities and supply structures, processing procedures and manufacturing processes. Are we talking about safety, reliability and consistent improvement? If so, then we are also talking about eSIGN. As the best signal tower ever created, the new eSIGN offers visibility in completely new dimensions – and the efficiency and reliability required for almost unlimited applications.

- ✔ **Machines and plant equipment**
- ✔ **Manual workstations**
- ✔ **Transportation and conveyor belts**
- ✔ **Shipping and packaging stations**
- ✔ **Loading bays and ramps**

With its individual modes, audible signals and light effects eSIGN ensures that you are always on the right track. Get started today and use eSIGN to introduce the future of signalling into your business.



eSIGN is available in a number of variants

Do you believe that a high degree of technological sophistication and uncomplicated usability should not be contradictory? We agree. eSIGN provides quick and intuitive configuration via IO-Link or transfer of the configuration via USB. A range of installation options are available and commissioning is easy. Just as you would expect from WERMA as Europe's leading signal.

eSIGN 15 segments



- ✓ 15 segments, freely triggerable
- ✓ With or without siren
- ✓ Standard 24 V version with transfer of the configuration via USB
- ✓ Version with IO-Link technology
- ✓ M12 connection

GENERAL DATA

Height / Diameter	371.5 mm / Ø 72.5 mm
Materials	PC
Lens colour / Housing colour	Transparent / Black
Protection rating	IP66 / IP69k
Connection	M12 connector 4 pole (IO-Link), 8 pole (standard 24 V)
Installation options	Base mounting, wall mounting, tube mounting
Operating temperature	-30° C to +60° C
Voltage	24 V DC
Current consumption	620 mA (with siren), 555 mA (without siren)
Part numbers	IO-Link version: 657 610 55 (with siren), 657 510 55 (without siren) Standard 24V: 657 600 55 (with siren), 657 500 55 (without siren)

OPTICAL DATA

Light source / Light colour	LED / Multicolour; various colours configurable
Optical light effects	Permanent, blinking, flashing, double flash, triple flash, rotating

AUDIBLE DATA: Only for versions with siren

Sound output (max) at 1m distance	105 dB (A)
Tone type / Number of tones	Multi-tone / 10 tones are configurable
Adjustable sound output / Adjustable range	4 stages / 80-105 dB (A), depending on tone type

eSIGN offers Maximum flexibility



✓ Base mounting



✓ Wall mounting



✓ Tube mounting

eSIGN 9 segments



- ✓ 9 segments, freely triggerable
- ✓ With or without siren
- ✓ Standard 24 V version with transfer of the configuration via USB
- ✓ Version with IO-Link technology
- ✓ M12 connection

GENERAL DATA

Height / Diameter	271 mm / Ø 72.5 mm
Materials	PC
Lens colour / Housing colour	Transparent / Black
Protection rating	IP66 / IP69k
Connection	M12 connector 4 pole (IO-Link), 8 pole (standard 24 V)
Installation options	Base mounting, wall mounting, tube mounting
Operating temperature	-30° C to +60° C
Voltage	24 V DC
Current consumption	405 mA (with siren), 335 mA (without siren)
Part numbers	IO-Link version: 657 110 55 (with siren), 657 010 55 (without siren) Standard 24V: 657 100 55 (with siren), 657 000 55 (without siren)

OPTICAL DATA

Light source / Light colour	LED / Multicolour; various colours configurable
Optical light effects	Permanent, blinking, flashing, double flash, triple flash, rotating

AUDIBLE DATA: Only for versions with siren

Sound output (max) at 1m distance	105 dB (A)
Tone type / Number of tones	Multi-tone / 10 tones are configurable
Adjustable sound output / Adjustable range	4 stages / 80-105 dB (A), depending on tone type

Never rest on your laurels

The new eSIGN is a visible symbol of consistent progress.

Many years ago, KombiSIGN saw us create a benchmark in the field of industrial signalling.

But have we rested on our laurels? We would not be where we are today if we had not constantly endeavoured to improve our solutions and make them even better – both in the small details and major new features.

The new eSIGN represents a major step forward – and a visible sign of technological progress that we resolutely encourage.

With electronic modularity, a robust industrial design and powerful features, it sets new

standards in terms of individuality and flexibility. And what is the result of all this? A quantum leap in terms of possibilities. Full-surface signalling enormously enhances perception and awareness. Consequently, the potential of the signal tower is optimally exploited. This enables our customers to maintain an even broader, more comprehensive, more precise and more proactive overview of their processes. Or, put simply: new dimensions in signalling. Yes indeed, it is no understatement to say that eSIGN is the best signal tower we have ever developed.



WERMA Signaltechnik GmbH + Co. KG

Dürbheimer Str. 15
78604 Rietheim-Weilheim
Germany
Phone + 49 74 24 95 57- 0 | Fax + 49 74 24 95 57- 44
www.werma.com | info@werma.com

WERMA Signaltechnik

Niederlassung Neuhausen am Rhf.
Rheingoldstrasse 50
8212 Neuhausen am Rheinfall
Switzerland
Phone + 41 52 674 00 60 | Fax + 41 52 674 00 66
www.werma.ch | info@werma.ch

WERMA Italia S.r.l.

Via dell'Artigianato 42
29122 Piacenza
Italy
Phone +39 05 23 04 45 44
www.werma.it | info@werma.it

WERMA SARL

56, Rue Colière
69780 Mions
France
Phone + 33 4 72 22 37 37
www.werma.fr | info@werma.fr

WERMA BENELUX

Poortakkerstraat 41C
9051 Sint-Denijs-Westrem
Belgium
Phone + 32 9 220 31 11
www.wermabenelux.com | info@wermabenelux.com

WERMA (UK) Ltd.

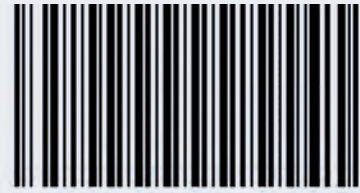
11 Regent Park
37 Booth Drive
Park Farm Industrial Estate
Wellingborough NN8 6GR
United Kingdom
Phone + 44 15 36 48 69 30 | Fax + 44 15 36 51 48 10
www.werma.co.uk | uksales@werma.co.uk

WERMA USA Inc.

1266 Oakbrook Drive, Suite A
Norcross, GA 30093 USA
Phone +1 (470) 361-0600
www.werma.com | us-info@werma.com

WERMA (Shanghai) Co., Ltd.

Building 8, No. 85, Mingnan Road, Songjiang,
Shanghai, P. R. C
201613
Phone +86 (0) 21 /5774-0022 | Fax +86 (0) 21 /5774-6601
www.werma.com.cn | info@werma.com.cn



11/21 · 540 000 044 · EN